



# TOMAUURI



HOT PRODUCT GUIDE | GUIDE DE PRODUITS EN FORTE DEMANDE



IN FIELD | À L'EXTERNE

IN STORE | EN MAGASIN

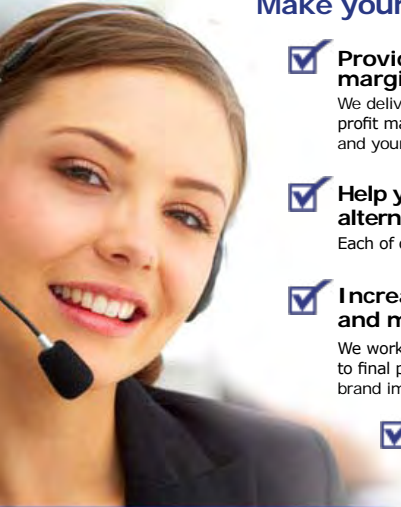


# Everything you need to put the **PROFIT** back in your Business!

For more than 20 years, Tomauri has been helping its customers maximize profits.

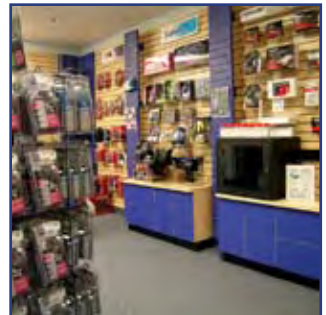
Here's how we can do it for you:

## Make your Company *More Successful*:

- 
- ✓ **Provide your customers a wide selection of high margin accessories**  
We deliver all computer related accessories that help you regain and increase your profit margin. Every product is carefully selected and refined to meet your needs and your customers' ever-changing market requirements
  - ✓ **Help you to compete with the "National Retailers" with alternative brands which won't undercut your selling prices**  
Each of our brands is created to deliver superior performance at a competitive price
  - ✓ **Increase sales through attractive bilingual packaging and merchandising materials**  
We work directly with our manufacturers starting from the design of the product to final packaging. We design our packaging to present a consistent and strong brand image suited to all retail environments
  - ✓ **Quality products reduce returns from your customers**  
Our strict manufacturing standards managed by our on-site overseas inspection team ensure the highest product quality to meet/exceed industry's standard

## Make your *Job Easier*:

- ✓ **Quick delivery from our extensive inventory with Same Day Shipping**  
Our commitment to our product lines ensure we have sufficient inventory to deliver ontime
- ✓ **Hassle-free RMA policy and stock rotation options**
- ✓ **Dedicated knowledgeable sales representatives to consult on your purchasing strategies**  
Our expert bilingual sales team are trained and equipped to design solutions to maximize the success of your business
- ✓ **24/7 ordering online**  
You can access the latest product information, availability, pricing, and place orders conveniently anywhere anytime



## Additional Solutions:

With over 20 years of importing experience, we built an extensive purchasing network in the Far East allowing us to source the complete solution for you and your customer. We offer:

- ✓ **Direct Import and Sourcing Program for your special needs**
- ✓ **Far East manufacturing to address your custom OEM needs**

# Tout ce dont vous avez besoin pour augmenter la **PROFITABILITÉ** de votre Entreprise!

Pour plus de 20 ans, TOMAURI a aidé ses clients à maximiser leurs profits.  
Voici de quelle façon nous pouvons le faire pour vous :

## Faites en sorte que votre entreprise rencontre plus de succès :

- ✓ **Fournissez à vos clients un grand choix d'accessoires à haute profitabilité**  
Nous offrons tous les accessoires informatiques qui vous aident à récupérer et à augmenter votre profitabilité. Chacun de ces produits est choisi et raffiné méticuleusement afin de rencontrer vos besoins dans un marché en constante évolution
- ✓ **Vous permet d'être en compétition avec les « Revendeurs nationaux » au moyen de marques qui n'affecteront pas vos prix de vente.**  
Chacune de nos marques est créée afin de fournir une performance supérieure à prix compétitif
- ✓ **Augmentez vos ventes au moyen de matériel de merchandising à emballage bilingue et attrayant**  
Nous travaillons directement avec nos fabricants en commençant par la conception du produit jusqu'à son emballage. Notre emballage est conçu afin de présenter une image de marque forte et avec régularité qui convient à tous les environnements du marché de détail
- ✓ **Des produits de qualité réduisent les retours des clients**  
Nos normes de fabrication rigides gérées sur place par notre équipe d'inspection assurent la plus grande qualité du produit qui rencontre ou dépasse les normes de l'industrie

## Facilitez votre Travail :

- ✓ **Livraison rapide à partir de notre inventaire avec « Expédition le même jour »**  
Notre engagement envers nos lignes de produits nous assure d'avoir un inventaire suffisant pour assurer une livraison ponctuelle
- ✓ **Politique d'autorisation de retour de marchandise et options de rotation de stocks sans souci**
- ✓ **Représentants des ventes compétents et consacrés à votre service que vous pouvez consulter au sujet de vos stratégies d'achats**  
Notre équipe de vente experte et bilingue est formée et équipée pour trouver des solutions dans le but de maximiser votre chiffre d'affaires
- ✓ **Placer des commandes en ligne 24/7**  
Vous pouvez avoir accès à l'information la plus récente sur les produits, la disponibilité, les prix et placer des commandes de façon pratique en tout temps et de n'importe où



## Solutions Additionnelles :

Avec plus de 20 ans d'expérience comme importateurs, nous avons développé un réseau d'approvisionnement très étendu en Asie de l'Est ce qui nous donne un accès à une solution pleine et entière pour vous et votre client. Nous offrons :

- ✓ **Importation directe et programme d'approvisionnement pour rencontrer vos besoins spéciaux**
- ✓ **Fabrication en Asie de l'Est pour rencontrer vos besoins sur mesure chez le fabricant d'équipement original**



**INTELLINET NETWORK SOLUTIONS** is a leading global provider of both active and passive networking products and sold exclusively through the independent reseller channel.

Its expansive range of award-winning, innovative technologies enables business partners to deliver end-to-end networking solutions from a single source, ensuring optimal systems efficiency, reliability and security.

With **INTELLINET NETWORK SOLUTIONS**, you can always count on a broad selection of high-quality products at competitive prices. All products carry a full lifetime warranty that safeguards all your purchases, the strongest quality commitment anyone can make.



### 19" Server Cabinets

- Heavy-duty steel frame made to support heavy servers and peripherals
- Smoked Plexiglas front door & removable side panels
- Vented front and rear door borders for reliable ventilation
- 4-post adjustable mounting rails to accommodate servers up to 36" deep
- Rail brackets are pre-punched for built-in cable management
- Multiple lacing points and slotted rail brackets add cable-management convenience
- Ships in flat-pack: Save on Shipping Fees and Storage Space, and be able to transport up floors or around tight corners with ease

203692	22U, 600mm	203586	32U, 900mm
203661	27U, 600mm	203432	42U, 900mm
203609	32U, 600mm		



### 19" Two & Four-Post Open Racks

- Powder-coated for protection against rust, oxidation, scratches, lacquer peeling, and strong acid and alkali erosion
- Ships in flat-pack: Save on Shipping Fees and Storage Space, and be able to transport up floors or around tight corners with ease

204217	Four-Post, 18U	204255	Two-Post, 22U
204200	Four-Post, 22U	204248	Two-Post, 32U
204187	Four-Post, 32U	204224	Two-Post, 42U
204163	Four-Post, 42U		



### 19" Wall Mount Cabinets

- Strong and reliable welded frame; Max. static load: 60 kg (132 lbs.)
- Installs easily with wall-mounted, 19" standard assembly
- Removable side panels (side-panel lock optional)
- Cables can enter through the top and bottom panels

204040	6U, 600mm	670067	Double Section, 9U, 600mm
204026	9U, 600mm	204101	Double Section, 12U, 600mm
203975	12U, 600mm	204088	Double Section, 13U, 600mm
203951	15U, 600mm	204064	Double Section, 18U, 600mm

## Hinged Wall Brackets

- For use with most 19" patch panels
- Each level is individually hinged
- 5 in. deep
- Screws included

402446	2U, 19"	402460	4U, 19"
402453	3U, 19"	402477	6U, 19"

402460



402446



## Mini Rack

- Desktop or wall mountable mini rack
- Designed for small LAN installations
- 19 in. Wide , 7 in. High (4 U), 12 in. Deep (30 cm)

167628	6U, 19"
--------	---------



## 19" Cabinet & Rack Shelves

674830	Two-Post Rack Shelf, 1U
677453	Two-Post Rack Shelf, 2U
678052	Four-Post Rack Shelf, 1U
678054	Cabinet Sliding Shelf, 1U
671075	Cabinet Fixed Shelf, 1U



674830



671075

## 19" Rack Accessories

671509	Rackmount Power Strip, 1U
680000	Rack Screw Set - 20pack



## 19" Wire Hangers & Cable Management

- Designed to accompany patch panels to keep large bundles well organized
- Can be mounted on standard 19 inch racks or cabinets

169950	Rackmount Cable Manager, 1U
130486	Metal Wire Manager, 1U
130493	Metal Wire Manager, 2U



130493



169950

# PASSIVE NETWORKING



## 12 Port Wall-Mount Patch Panels

- Solid and reliable terminations for copper cabling featuring a minimum of 3mm 50 micro-inch gold plated jack contacts
- Compatible with both 110 and Krone punch down tools
- Supports 22 to 26 AWG stranded and solid wire
- Ideal for Ethernet, Fast Ethernet, and Gigabit Ethernet network applications

162470	12 Port Cat5e Wall-Mount Patch Panel
560269	12 Port Cat6 Wall-Mount Patch Panel

## Angled Patch Panels

- Modules angled at 45° to increase the cable bend radius
- Solid and reliable terminations for copper cabling featuring a minimum of 3mm 50 micro-inch gold plated jack contacts
- Compatible with both 110 and Krone punch down tools
- Supports 22 to 26 AWG stranded and solid wire
- Ideal for Ethernet, Fast Ethernet, and Gigabit Ethernet network applications
- Meets 19" rackmount standards

510417	12 Port Cat5e, 1U	513227	12 Port Cat6, 1U
513111	16 Port Cat5e, 1U	513388	16 Port Cat6, 1U
513128	24 Port Cat5e, 1U	513395	24 Port Cat6, 1U
513135	32 Port Cat5e, 2U	513432	32 Port Cat6, 2U
513166	48 Port Cat5e, 2U	513456	48 Port Cat6, 2U

## Colour-Coded Patch Panels

- Connectors are color coded in groups of six to simplify cable identification
- Solid and reliable terminations for copper cabling featuring a minimum of 3mm 50 micro-inch gold plated jack contacts
- Compatible with both 110 and Krone punch down tools
- Supports 22 to 26 AWG stranded and solid wire
- Ideal for Ethernet, Fast Ethernet, and Gigabit Ethernet network applications
- Meets 19" rackmount standards

513678	24 Port Cat5e, 1U	513692	24 Port Cat5e, 1U
513685	48 Port Cat5e, 2U	513739	48 Port Cat6, 2U

## Standard Patch Panels

- Solid and reliable terminations for copper cabling featuring a minimum of 3mm 50 micro-inch gold plated jack contacts
- Compatible with both 110 and Krone punch down tools
- Supports 22 to 26 AWG stranded and solid wire
- Ideal for Ethernet, Fast Ethernet, and Gigabit Ethernet network applications
- Meets 19" rackmount standards

513531	12 Port Cat5e, 1U	403016	12 Port Cat6, 1U
513548	16 Port Cat5e, 1U	519526	16 Port Cat6, 1U
513555	24 Port Cat5e, 1U	520959	24 Port Cat6, 1U
513562	32 Port Cat5e, 2U	403023	32 Port Cat6, 2U
513579	48 Port Cat5e, 2U	560283	48 Port Cat6, 2U

## Keystone Jack Inserts

- Punch-down type
- Available for both Cat5e and Cat6
- Compatible with 110 and Krone punch-down tools
- Available in Black, Blue, Green, Red, Yellow, Orange and White



## Modular Plugs

- Gold plated contacts
- For unshielded twisted pair applications
- Available in 2-Prong terminal and 3-Prong terminal
- Available for both Cat5e and Cat6, in either 3U and 15U



## Modular Couplers & Inline Couplers

- 50 micron gold plated contacts
- Available for both unshielded twisted pair (UTP) Cat5e and Cat6 cable
- Also Available in RJ12 6P6C F/F & RJ45 8P8C F/F



## Wall Plates A/V Jacks

- Component RCA Insert
- HDMI Insert
- Keystone Flush Wall Plates 1 - 6 Ports
- Loaded 1 & 2 Port - RJ12
- RCA, Speaker and S-Video Jacks



## Surface Mount Boxes

- Use with any standard keystone jacks
- Blank models accommodate all keystone Jacks
- Ideal for all network premise wiring



## Service Kits and Tools

- RJ12/45 Crimp Tool
- Cable Stripper
- Fish Tape - 50ft
- Punch Down Tool - 100/88

1123	Basic Computer Tool Kit - 11 pieces
1124	Basic Service Kit - 19 piece
1125	Technician Tool Kit - 23 piece



## Cable Testers

7200	Premise Wire Testing
351898	RJ45 Cable Tester
7174	Ethernet Link Tester
7199	Multi Network Tester



**Pro Series Network Dome Camera**

- High-resolution (520 TV lines) 1/3" Sony Super HAD CCD image sensor
- Up to 30 frames per second in all image resolutions
- Supports image resolutions up to 720 x 480 (D1)
- Supports simultaneous MPEG4 and Motion-JPEG image compression
- Supports MPEG4 video streaming with CBR (constant bit rate) and VBR (variable bit rate) modes
- Supports HTTPS encryption for enhanced security
- Audio support, full duplex, up to 3.4 kHz

524667	MPEG4 + Motion-JPEG Dual Mode, CCD, NTSC
--------	--

**Pro Series Network Cameras - CCD**

503181

- Full-featured, high-quality network camera covers security surveillance and video conference needs
- Supports low light conditions, minimum 0.1 lux
- Integrated motion detection with pre- and post-alarm image/video buffering

503181	MPEG4 + Motion-JPEG Dual Mode, CCD, Day/Night, NTSC
--------	---

550253	Wireless MPEG4 + Motion-JPEG Dual Mode, CCD, Day/Night, NTSC
--------	--

**Pro Series Network Cameras - CMOS**

- 1/3" CMOS image sensor for crystal clear images
- Supports image resolutions up to 640 x 480 (VGA)
- Integrated motion detection with pre- and post-alarm image buffering
- Event-triggered FTP and email upload of still images
- Supports light conditions down to 2.5 lux
- JPEG video compression, up to 25 frames per second

550710	JPEG, CMOS, PAL/NTSC
--------	----------------------

**Pro Series Digital PTZ Network Cameras - CMOS**

550482

- 2.0 megapixel CMOS image sensor for crystal-clear images
- DigitalClarity CMOS imaging technology
- Up to 25 frames per second in all image resolutions
- Supports image resolutions up to 720 x 480 (D1)
- Digital Pan/Tilt/Zoom control via Web browser with 4.5x digital zoom

550468	MPEG4 + Motion-JPEG Dual Mode, 2.0 Megapixel CMOS, PAL/NTSC
--------	---

550482	Wireless MPEG4 + Motion-JPEG Dual Mode, 2.0 Megapixel CMOS, PAL/NTSC
--------	--

**Pro Series Night Vision Network Cameras**

550321

- For surveillance in low light or nighttime conditions, minimum 0 lux (complete darkness)
- Equipped with an IR lens with 12 IR LEDs and 1 IR sensor
- IR sensitive, supports external IR illuminators
- Integrated motion detection with pre- and post-alarm image/video buffering

550314	MPEG4 + Motion-JPEG Dual Mode, CCD, Day/Night, IR Lens, NTSC
--------	--

550321	Wireless MPEG4 + Motion-JPEG Dual Mode, CCD, Day/Night, IR Lens, NTSC
--------	---

**SOHO Network Cameras**

- Digital 24-bit color Motion-JPEG video
- 300k CMOS image sensor provides excellent image quality
- High-speed hardware-based image compression
- Including easy-to-use 16-channel camera viewing and recording utility

503792	NSC10 Network Camera
550918	NSC10-WG Network Camera - MJPEG, 300k

503792



524421

**Wireless SOHO Network Cameras**

524421	NSC15 Network Camera - MJPEG w/ Audio
550901	NSC15-WG Network Camera - MJPEG, MPEG4

**Wireless Pan/Tilt Network Camera**

- 1.3 Megapixel CMOS image sensor for crystalclear images
- Supports simultaneous MPEG4 / Motion-JPEG image compression
- Motorized wide-range pan and tilt control via Web browser & Windows utility
- 4X digital zoom

550857	NSC18-WN Pan/Tilt Network Camera, 1.3mp
--------	---



For A Live Demonstration, visit [www.networkipcamera.com/](http://www.networkipcamera.com/)

**Pro Series Network Video Server**

- Turn your CCTV Camera into a professional Network IP Camera
- 1 analog video BNC input, 1 analog video BNC loop-through port

550376	MPEG4 + M-JPEG Dual Mode, Two-way Audio
--------	---

**Power over Ethernet Devices**

- Ideal for applications where power is not present
- Replaces the power cord for the camera

524179	Power Over Ethernet Injector
521444	Power Over Ethernet Injector
521451	IP Web Cam Power Over Ethernet Adaptor



521451

524179

**Network Camera Accessories**

169295	IP Web Camera Pan Motor
550673	IP Web Camera Zoom Lens
550123	IP Web Camera Wide Angle Lens
171144	IP Web Camera Indoor Enclosure
172103	IP Camera Heated Outdoor Enclosure



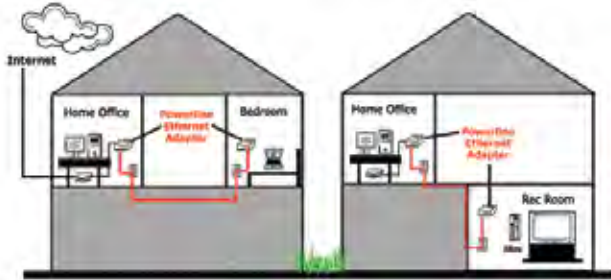
171144

550673

### Homeplug Turbo Ethernet Bridge



- Expand your home network using existing power lines
- Extends high-speed Internet around the home
- Provides network access for computers and gaming consoles
- Plug and Play (no drivers required)
- Up to 85 Mbps network data rates and data security through 56-bit encryption
- HomePlug 1.0 compliant



503846	Homeplug Turbo Ethernet Bridge - 85mMbps
--------	--

### ADSL2+ Broadband Modem Router



- Includes integrated ADSL2+ modem
- Supports 24 Mbps ADSL2+ downstream data rate
- Supports ADSL standards G.992.1 (G.dmt), G.992.2 (G.lite), G.992.3 (ADSL2), G.992.4 (splitterless ADSL2) and G.992.5 (ADSL2+) for Annex A
- Integrated 10/100 Mbps LAN switch with Auto MDI/MDI-X support
- Supports virtual server, port forwarding and DMZ (demilitarized zone)
- Supports DDNS (dynamic DNS)
- Supports UPnP (Universal Plug and Play)
- Supports VPN pass-through (IPSec, PPTP, L2TP)
- Content control through URL and domain filter

523462	10/100 Mbps LAN Switch
--------	------------------------

### 4 Port Broadband Router



- Integrated 10/100 Mbps LAN switch with Auto MDI/MDI-X support
- DHCP server assigns IP addresses for all LAN users
- Supports virtual server and DMZ (demilitarized zone)
- Supports DDNS (dynamic DNS)
- Supports UPnP (Universal Plug and Play)
- Supports VPN pass-through (PPTP, L2TP)
- Supports static routing
- Content control through MAC address and URL filtering
- DHCP server supports static lease management
- Integrated scheduler to limit Internet access to client computers in the LAN

524537	10/100 Mbps LAN Switch
--------	------------------------

## Featured Wireless Products

### Wireless 300N Presentation Gateway

The Wireless 300N Presentation Gateway lets you connect your wireless computer(s) to any VGA- or HDMI-equipped projector or monitor without ever connecting a single video cable. Wireless N technology ensures that there is ample bandwidth available for all your presentation needs.

It operates as a standard access point, as such, it is visible in your network like any other wireless network. Simply connect to the network and start the presentation software utility. A push of a button on the remote controller is all that is needed to start your presentation immediately. The remote control allows you to change to the screen of any one of up to 16 connected users. Forget cables — just connect to the wireless network and present away!

- Presents the screen contents from a computer to a projector or monitor wirelessly
- Provides Wireless N access point functionality for up to 16 users
- Supports VGA and HDMI connections with auto-scaling video output
- Includes an infrared remote control for switching between the active users
- Complies with 2.4 GHz Draft IEEE 802.11n standard
- Backward compatible with IEEE 802.11g/b standards
- 2T2R MIMO technology for enhanced throughput and coverage
- Supports Wi-Fi Protected Setup (WPS)
- Video mode allows video playback on the connected video device or projector

524759	Wireless 300N Presentation Gateway, 300Mbps
--------	---



### GuestGate Internet Access Gateway Device

The GuestGate HotSpot Gateway allows you to easily accommodate guests in your offices without burdening your IT administrator with last-minute LAN configuration requests, your visitors will be able to access the Internet instantly in your facility, without compromising the security of your network.

- Provides secure instant guest access to the public network
- HNP Technology protects the host network from guests
- IP Plug and Play for configuration-free client operation
- No configuration required; GUESTGATE automatically detects the network settings
- Client isolation through Layer 3 VLAN technology
- Bandwidth control (upstream and downstream)
- Password option for Internet access
- Packet filter for IP addresses, domains and TCP/IP service ports
- Customizable welcome page (banner and text changeable)
- Firmware upgrade through Web-based user interface

523240	GuestGate Internet Access Device
--------	----------------------------------



### Wireless Super G Outdoor PoE Access Point and Bridge

- Up to 108 Mbps network data transfer rate
- Temperature controlled with Cable Manager Bracket high-power PoE access point & bridge
- Industrial-grade IP 66 housing for optimal protection against dust and water
- Withstands wind speeds of up to 120 km/h (75 mph)
- Up to 5 km (3 mi.) wireless distance in PtP bridging mode
- Integrated 9 dBi panel antenna

503679	Super G Outdoor PoE Access Point & Bridge
--------	---





## Wireless 300N 3G Router

The **Wireless 300N 3G Router** supports both UMTS/HSDPA and EVDO networks, where you can experience greatly enhanced network speeds with the convenience of 3G mobile technology. When connecting a 3G / 3.5G USB modem to the router, all network (wired/wireless) users can share the Internet connection.

524681	4 Port 3G Wireless Router, 300N, 2T2R
--------	---------------------------------------



## Wireless 300N Access Point

The **Wireless 300N Access Point** serves multiple purposes — an access point for your wireless network supporting multiple SSIDs and tagged VLANs, a wireless bridge for point-to-point connections or WDS setups, and a RADIUS authentication server — and brings it all together so that the devices can access a high-speed Internet connection.

This access point can be configured in any one of five modes: 1) Access Point (AP), 2) Point-to-Point (PTP), 3) Point-to-Multi-Point (PTMP), 4) Universal Repeater or 5) AP Client (Station Infrastructure). Add support for multiple ESSIDs and VLANs to that and it becomes clear that whatever your requirements are, the 300N Access Point provides the solution.

524728	Wireless Access Point, 300N, 2T2R
--------	-----------------------------------



## Wireless Routers

524315	4 Port Wireless Gigabit Router, 300N, MIMO
523967	4 Port Wireless Router, 300N, 3T3R
524490	4 Port Wireless Router, 300N, 2T2R
524445	4 Port Wireless Router, 150N
524360	4 Port Wireless ADSL 2+ Modem Router, 300N
524636	4 Port Wireless G Router, 54 Mbps



## Wireless Access Points & Bridges

524735	Wireless Access Point, 300N, 2T2R, PoE
524704	Wireless Access Point, 150N, 1T1R
503082	High Power Wireless G Access Point, 23dBm
501903	Wireless G Access Point, 54Mbps



## Wireless PC / PCI Cards

524070	N PC Card, 300Mbps, MIMO
505314	G Cardbus Card, 54Mbps
523981	N PCI Card, 300Mbps, MIMO
524575	G PCI Card, 54Mbps, w/ 2dBi antenna

### Wireless USB Adapters

- Connect either notebooks or PC computers to a wireless network
- Quick, easy and convenience in USB adapters

523974	USB 300N Adapter, 300Mbps
524698	150N USB Adapter, 150Mbps, w/ antenna
524438	150N USB Adapter, 150Mbps, w/ charging stand
503457	G USB Adapter, 54Mbps, w/ 4dBi antenna
524551	G USB Adapter, 54Mbps



524438



503457

### Omni-Directional Antennas - Indoor

- Ideal for increasing wireless network range and speed
- 360° horizontal beam width

502290	2.4GHz, 5dBi, 29° vertical beam width
524018	2.4 - 2.5GHz, 7dBi, 21.6° vertical beam width
524025	2.0 - 6.0GHz, 4dBi, 55° vertical beam width



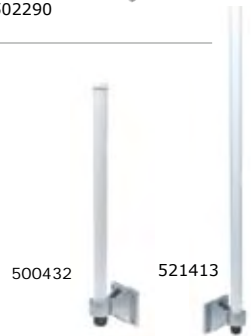
502290

524025

### Omni-Directional Antennas - Outdoor

- Ideal for increasing wireless network range and speed
- 360° horizontal beam width
- Weatherproof and corrosion resistant
- For pole and wall mounting

500432	2.4GHz, 5dBi, 27° vertical beam width
521413	High-Gain, 8dBi, 15° vertical beam width
502306	High-Gain, 12dBi, 7° vertical beam width



500432

521413

### Directional Antennas - Indoor

- Increases the range of wireless connection
- Eliminate weak and dead spots in any wireless network
- 65° horizontal and 60° vertical beam width

525138	2.4GHz, 6dBi
--------	--------------



### Directional Antennas - Outdoor

- Ideal for building-to-building wireless connections
- Weatherproof and corrosion resistant

521383	High-Gain Panel Antenna, 9dBi, 45° beam width
502313	High-Gain Panel Antenna, 18dBi, 18° beam width
503785	Parabolic Grid Antenna, 24dBi, 7.7°/6.5° beam width



502313

503785



502054

### Fast Ethernet Desktop Switches

- 10/100 auto-sensing ports automatically detect optimal network speeds
- Supports any combination of 10 Mbps or 100 Mbps network devices
- Store and forward switching architecture
- Supports 1000 MAC address entries
- 48 kBytes buffer memory

502023	5 Port, Plastic	522595	16 Port, Metal
502054	8 Port, Plastic		



522595

520416

### Fast Ethernet Rackmount Switches

- 10/100 auto sensing ports automatically detects optimal network speeds
- Supports any combination of 10 Mbps or 100 Mbps network devices
- Rack-mountable metal chassis
- 10/100 Mbps for Half/Full Duplex
- Store and forward switching architecture

520409	16 Port	520317	16 Port with optional fibre ports
520416	24 Port	520331	24 Port with optional fibre ports
522618	48 Port	523929	24 Port + 2 Gigabit Combo ports



520317



500487



500470	SC Module
500487	ST Module

### Gigabit Ethernet Desktop Switches

- 10/100/1000 auto-sensing ports automatically detect optimal network speeds
- High performance, half and full duplex, with zero packet loss
- Full flow control support provides optimum performance
- Supports up to 4,096 MAC address entries
- Supports jumbo frames up to 4.6 kBytes



524124

524117	5 Port, Plastic	530347	8 Port, Metal
524124	8 Port, Plastic	523530	16 Port, Metal
530378	5 Port, Metal	523523	14 Port, Metal



523523

524148

### Gigabit Ethernet Rackmount Switches

- 10/100/1000 auto-sensing ports automatically detect optimal network speeds
- All RJ-45 ports with Auto-MDIX (auto uplink) support
- Wire-speed packet filtering and forwarding rate
- Supports jumbo frames up to 9.6 kBytes
- Full/half duplex operation



524162

524148	16 Port Gigabit Ethernet Rackmount Switch
524162	24 Port Gigabit Ethernet Rackmount Switch

**USB Ethernet Adapter**

- Plug into USB port and create an instant RJ45 network connection
- Ideal for high-speed DSL/cable modem Internet access

503686	USB 2.0 Fast Ethernet Adapter, Black, 5"
--------	--

**Fast Ethernet PCI Network Adapters**

509510	10/100 PCI Network Adapter
522328	Gigabit PCI Network Adapter
522533	Gigabit PCI Express Ethernet Card



522533

**Fast Ethernet PC Network Cards**

520522	10/100 Ethernet PCMCIA Card
524056	Gigabit Ethernet PC Express Card



524056

**Mini-KVM Switches**

- Supports video resolutions up to 1920 x 1440 pixels

524513	2 Port Mini PS/2 KVM Switch
524520	2 Port Mini PS/2 KVM Switch with Audio
500869	2 Port Mini USB KVM with Audio



500869

**KVM Switches**

- Supports video resolutions up to 2048 x 1536 pixels
- Includes KVM cables for computer connection

157025	2 Port KVM Switch with Cables & Audio Support
157032	4 Port USB KVM Switch with PS/2 & Audio Support
150101	2 Port KVM Switch with PS/2 & Audio Support
150118	4 Port KVM Switch with PS/2 & Audio Support

157025



150118

**Rackmount KVM Switches**

- Supports video resolutions up to 2048 x 1536 pixels
- Computer selection and operation using front-panel push buttons, keyboard hotkeys and OSD menu

524629	8 Port Combo USB & PS/2 KVM Switch
524643	16 Port Combo USB & PS/2 KVM Switch

524629



524643

**Print Servers**

509039	1 Port Wired Print Server
509060	1 Port Wireless Print Server



## Global Manufacturing Solutions



### Today's Enterprises need to be Competitive!

The need to be competitive in today's market is shared by all enterprises with significant growth objectives. It is often a mission-critical objective just to survive in today's economy. Tomauri has had successful business relationships with numerous manufacturers in the Far East since its inception in 1987.

### Tomauri the Essential Resource

Tomauri's Global Manufacturing Solutions division is an essential resource for those companies who recognize the need to exploit the advantage of offshore manufacturing or sourcing. The expertise, contacts and business process that have been successfully used by Tomauri are available to those enterprises that make use of Tomauri's Global Manufacturing Solutions Division.

### Custom Solutions to Meet Varying Needs of Manufacturing Enterprises

Whether the need is for up front assistance to jump-start a direct import program or whether it is to implement a full long term turn key program for manufacturing or sourcing, the right choice is Tomauri's Global Manufacturing Solutions Division and its existing resources in the Far East

### Explore the Opportunity Today

To gauge the impact that Global Manufacturing Solutions can have on your business, call and discuss the custom solution that best meets your needs!

## Make The Best Connections!

To deliver a successful project, you need to rely on the right connectivity:

- **Retailers** - Choose from our standard polybag or blister packaging, both bilingual.
- **System Integrators** - Choose from our standard bilingual polybag packaging, or we have popular items in bulk packaging.
- **Manufacturers** - Need your own customized cables / adapters? We can build to your specifications from wiring to packaging to labelling, or even sourcing a specific connector.



### Power & Extension Cables

North American Power Cords
----------------------------

Standard/Angled, Notebook, Y, Extension & Medical Grade
---

* Also Available in Bulk Quantities
-------------------------------------

International Power Cords
---------------------------

European, UK, South African, Australian, and Swiss
--

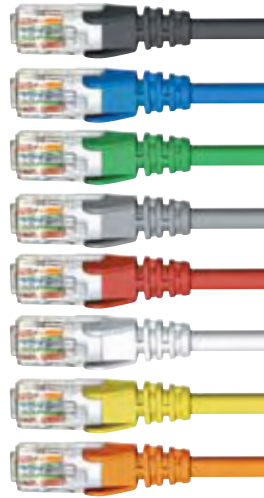
## Networking Cables

Cat5e Cables		
Blue, Black, White, Red, Green, Yellow, Grey		
1.5, 3, 5, 6, 7, 10, 14, 20, 25, 35, 50, 75, 100, & 150 ft		

Cat5e X-Over	Orange	3, 7, 10, 14, 25, 50, 75, & 100 ft
--------------	--------	------------------------------------

Cat6 Cables		
Blue, Black, White, Red, Green, Yellow, Grey		
1.5, 3, 5, 7, 10, 14, 20, 25, 35, 50, 75, 100, & 150 ft		

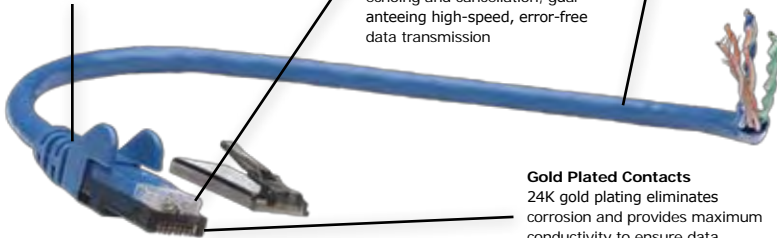
Cat6a Cables		
Blue, Black, White, Grey		
3, 7, 10, 14, 25, 50, 75, & 100 ft		



**Moulded Snag-Free Boot**  
 Provides strain-relief and prevents cable tangling

**Impedance Matched**  
 Wire and connectors are carefully matched to virtually eliminate echoing and cancellation, guaranteeing high-speed, error-free data transmission

**Unique Jacket**  
 Exclusive polymer technology provides unsurpassed durability and flexibility



**Gold Plated Contacts**  
 24K gold plating eliminates corrosion and provides maximum conductivity to ensure data integrity

- All cables meet and exceed networking specifications
- UL, cUL/CSA Approved

## Network Bulk Cables

- All cables meet and exceed networking specifications

Cat5e Spools	Solid & Stranded	250, 500, & 1000 ft
Cat6 Spools	Solid & Stranded	250, 500, & 1000 ft



USB Cables



USB 3.0 A-B	M/M	Black	6, 10, & 15 ft
USB 3.0 A-A	M/M	Black	6, 10, & 15 ft
USB 3.0 A-Micro-B	M/M	Black	6, 10, & 15 ft
USB 2.0 A-B	M/M	Beige, Black, Clear	6, 10, & 15 ft
USB 2.0 A-B	M/M	LED - Blue, Green, Red	6, 10, & 15 ft
USB 2.0 A-A	M/M	Grey	6, & 10 ft
USB 2.0 A-A	M/F	Beige, Black, Clear	6, 10, & 15 ft
USB 2.0 A-A	M/F	LED - Blue, Green, Red	6 ft
USB 2.0	M/M	Clear, Grey	6 & 10 ft
USB 2.0 A-Micro-B	M/M	Black, Clear	6 ft
USB 1.1 A-B	M/M	Beige, Black	3, 6, 10, & 15 ft
USB 1.1 A-A	M/F	Beige, Black	6, 10, & 15 ft

USB Active Cabling



USB Extender	M/M	Clear	16, & 36 ft
USB Line RJ45 Extender	M/M	Black	
Vista Transfer Cable	M/M	Clear	7ft
USB to Serial Converters	M/M	Black, Clear	1.5ft
USB to Parallel Printer Converters	M/M	White, Clear	6ft
USB to 2 PS2 Cable	M/M	Black	7.6in
USB 2.0 VGA Converter	M/M	Black	18in

USB 2.0 SATA Adapters



USB 2.0 to IDE Adapter	M/M	Black	w/ power supply
USB 2.0 to SATA/IDE Adapter	M/M	Black	w/ power supply
USB 2.0 to SATA 150 Adapter	M/M	Black	

Firewire Cables



Firewire	4Pin-4Pin	Black	6, 10, & 15 ft
Firewire	6Pin-4Pin	Black	6, 10, & 15 ft
Firewire	6Pin-6Pin	Black	6, 10, & 15 ft
Firewire	4Pin-9Pin	Black	6, 10, & 15 ft
Firewire	6Pin-9Pin	Black	6, 10, & 15 ft
Firewire	9Pin-9Pin	Black	6, 10, & 15 ft

**PS/2 Cables**

PS/2	M/M	Black, Beige	6, 10, 15, 25, & 50 ft
PS/2	M/F	Black, Beige	6, 10, 15, & 25 ft



**Serial & Parallel Cables**

DB9	M/M	Beige	6, 10, 15, 25, & 50 ft
DB9	M/F	Beige	6, 10, 25, & 50 ft
DB9	F/F	Beige	6 ft
DB9 Null Modem	F/F	Beige	10 ft
DB9 / DB25	M/F	Beige	6 ft
DB9 / DB25	F/M	Beige	6, & 10 ft
DB25	M/M	Beige	6, 10, 15, 25, & 50 ft
DB25	M/F	Beige	6, 10, 15, 25, & 50 ft
DB25 Null Modem	M/F	Beige	6 & 10 ft
DB25 Null Modem	F/F	Beige	10 ft



**SAS Cables**

SFF8484 to SFF8484	Clear	50cm
SFF8484 to SFF8484 w/power	Red	50cm
SFF8484 to 4 SATA	Red	50cm



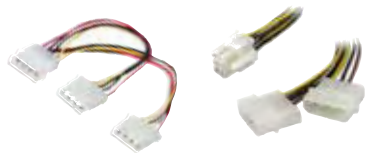
**SERIAL ATA Cables**

SATA	M/M	Red, Black	50 & 100 cm
SATA L-type	M/M	Red	50cm
eSATA	M/M	Red	50 & 100 cm
eSATA backpanel 2 Port	M/F	Red	30cm



**Internal Power Cables**

3.5" & 5.25" Drive Internal Power
Power Supply Adapter
PCI Express Video Card Power



**Antenna Cables**

N-Type Male/RP-SMA Antenna	M/M	Black	6, 10 & 25 ft
----------------------------	-----	-------	---------------





### Displayport & Mini Displayport Cables

Displayport	M/M	Black	3, 6, 10, & 15 ft
Mini Displayport	M/M	Black	6 ft



### HDMI & Mini HDMI Cables

HDMI 1.4	M/M	Black	6, 10, & 15 ft
HDMI 1.3	M/M	Black	3, 6, 10, 15, 20, 25, 35, & 50 ft
HDMI mini	M/M	Black	6 ft
HDMI mini	M/HDMI-M	Black	6 ft



### Audio/Video Cables

Composite	M/M	Black	6, 10, 15, & 25 ft
Composite	M/F	Black	6, & 10 ft
S-Video/RCA	M/M	Black	6, 10, 15, & 25 ft
Laptop/Stereo	M/M	Black	6, 10, 15, & 25 ft



### Audio Cables

Optical Digital Audio		Black	3, 6, 10, & 15 ft
Speaker Wire		Clear	50 & 100 ft



### Headphone Cables

Headphone 3.5"	M/M	Black	3, 6, 10, 15, 25, & 50 ft
Headphone 3.5"	M/F	Black	6, 10, 25, 50, & 100 ft
Headphone 3.5"	M/F/F	Black	6ft
Headphone/RCA	M/M	Black	6in & 6ft
Headphone/RCA	M/F	Black	6in & 6ft
Headphone/RCA	F/F	Black	6in & 6ft



### RCA Cables

RCA	M/M	Black	6, 10, & 15 ft
RCA	M/F	Black	6, 10, & 15 ft
2RCA	M/M	Black	6, 10, & 15 ft
2RCA	M/F	Black	6, 10, & 15 ft

### Video Cables: DVI

DVI-D	M/M	Black	6, 10, 15, 20, 25, 35, & 50 ft
DVI-D	M/F	Black	6, & 15 ft
DVI-D / HDMI	M/M	Black	6, 10, 15 & 25 ft
DVI-I	M/M	Black	6, 10 & 15 ft
DVI-A/VGA	M/M	Black	6 ft



### Video Cables: VGA

Premium VGA	M/M	Black	6, 10, 15, 25, 50, 75, & 100 ft
True 15-Pin	M/M	Black	6, 10, 15, 25, 50, 75, & 100 ft
True 15-Pin	M/F	Black	6, 10, 15, 25, 50, 75, & 100 ft
VGA	M/M	Black	6, & 10 ft
VGA	M/F	Black	6, & 10 ft



### Component Video Cables

Component	M/M	Black	6, 10, & 15 ft
DVI to Component	M/M	Black	6 ft
VGA to Component	M/M	Black	6 ft



### S-Video Cables

S-Video	M/M	Black	3, 6, 15, 25, 50, & 100 ft
S-Video to RCA	M/M	Black	6, 10, & 15 ft



### RG6 Cables

RG6	M/M	Black	6, 10, 15, 25, 50, 75 & 100 ft
-----	-----	-------	--------------------------------



### KVM Cables

- 3-in-1 (PS/2 keyboard, PS/2 mouse, high density DB15 monitor) KVM cable specifically designed to reduce cable clutter and provide reliable signal quality.

PS/2 KVM Combo	M/M	Black	6 & 10 ft
----------------	-----	-------	-----------





All Blue Diamond cables are designed to deliver superior performance at a competitive price. Colour-Coded premium retail packaging clearly identifies the name and use of each cable.

**Included:**

- A number of proven suggested product mixes
- Free 18" x 24" full colour poster
- Free slat-wall pegs & re-order tags
- Instant Savings on initial order (for walls)
- Free signage and ceiling hanger (for walls)
- Free spinning rack with sign (POP program)
- Bilingual packaged retail products

See Page 24 for Product Listing



Tomauri's Premium line of audio and video cables is available with this merchandising program. Stylish retail packaging helps make these products stand out in a wall display.

**Included:**

- Members Only Specials (includes Instant Savings on initial order)
- Exclusive Pricing for future orders
- Each program includes top selling SKUS to maximize profit
- All cables come in stylish bilingual packaging
- Free Streamwire banner and window decal
- Re-order tags included for easy re-stock

See Page 25 for Product Listing



**A complete offering of surge protectors targeting different needs of all home & office users, as well as products for mobility and audio/video.**

**Included:**

- Instant savings on initial order
- Mail-in coupons for end users on certain models
- Attractive bilingual retail packaging
- Suggested plan-o-grams
- Free 36" x 10" vinyl PowerPRO banner
- Free re-order tags and slat-wall pegs

**See Page 26 for Product Listing**



**Everki's strong focus on comfort, convenience, durability and style makes these laptop bags and accessories top of the line not only in quality, but style as well.**

**Included:**

- Instant savings on initial order
- Complete SKU and colour mix flexibility
- Merchandising and marketing support
- Everki.com Dealer Listing
- Priority Access to new Everki product
- Free Everki rack & signage!

**See Page 27 for Product Listing**





BlueDiamond cables are designed to deliver superior performance at a competitive price. Any system is only as good as its weakest link; don't compromise yours with inferior cabling



### USB 2.0 & Firewire Cables

USB 2.0 AB	M/M	Black, Clear	3, 6, 10, & 15 ft
USB 2.0 AA	M/F	Black, Clear	6 & 10 ft
USB 2.0 A - Micro B	M/M	Black	6 ft
USB 2.0 A - Mini 4	M/M	Black	6 ft
USB 2.0 A - Mini 6	M/M	Black	6 ft
USB 2.0 AA Kit w/ 4 adapters	M/F	Black, Clear	6 ft
Firewire 4-4	M/M	Black	6, 10 & 15 ft
Firewire 6-4	M/M	Black	6, 10 & 15 ft
Firewire 6-6	M/M	Black	6, 10 & 15 ft



### Audio/Video Cables

HDMI	M/M	Black	3, 6, 10, 15, 25 ft
HDMI CL3	M/M	Black	6, 15, & 25 ft
HDMI mini	M/M	Black	6 ft
HDMI mini to HDMI	M/M	Black	6 ft
Mini Displayport Range	M/M	Black	6 ft
DVI-D to HDMI	M/M	Black	6, 10, 15, & 25 ft
DVI-D	M/M, M/F	Black	6, 10 & 15 ft
DVI-I	M/M, M/F	Black	6 & 10 ft
VGA	M/M	Black	6, 10, & 25 ft
VGA	M/F	Black	6, 10, 15, & 25 ft
S-Video	M/M	Black	6, 10 & 15 ft



### PS/2 Cables

PS/2	M/F	Black	6 & 10 ft
------	-----	-------	-----------



### Networking Cables

Cat5e Patch Cable	Blue, Black, Red, Grey & White	3, 7, 10, 14, & 25 ft
Cat6 Patch Cable	Blue, Black, White & Grey	3, 7, 14, 25, & 50 ft

Streamwire performance cables are designed to deliver the superior sound and picture quality of other premium brands but at a fraction of the cost.



### Video Series

- For connecting all high-definition video devices

Component Video	3, 6, 15 & 25 ft
S-Video	3, 6 & 15 ft



### Audio Series

- For connecting all types of audio devices

Digital Optical Audio	3, 6, & 15 ft
Coaxial Digital Audio	3, 6 & 15 ft
Stereo RCA Audio	3, 6, 15 ft
Laptop to Stereo	15 ft



### Audio/Video Series

- For connecting all audio and high-definition video devices

HDMI CL3	6 & 15 ft
HDMI M/M	6, 10, 15, & 25 ft
Composite Video/RCA Audio	3, 6, & 15 ft



### Audio/Video Accessories

CableWrap Cable Organizer	8 ft
Cable Ties - 5 pack	
PureVue Screen Cleaner	Reg & Mini
Screen Cleaner Replacement Pads	Reg & Mini



View the Full Line in Detail : [www.streamwire.net](http://www.streamwire.net)



A complete offering of surge protectors not only engineered with superior circuitry, but are also functional and well-designed.

### PowerPRO Home and Office Series



- Rotating outlets provide maximum flexibility and eliminate the weakness of traditional surge protectors
- Child protection covers, cord management, and a heavy duty power cord with flat offset plug features on most models



34612	6 Outlet Powerbar - 4ft cord
34603	6 Outlet Surge Protector, 350 joules, EMI/RFI - 6ft cord
34586	7 Outlet Surge Protector, 1050 joules, EMI/RFI - 6ft cord
34608	8 Outlet Surge Protector, 2160 joules - 6ft cord
34605	10 Outlet Surge Protector, 2880 joules, - 8ft cord + cables
34606	12 Outlet Surge Protector, 4320 joules - 8ft cord + cables

### PowerPRO Mobility Series



- Small compact designs, easily portable
- Cord folds away into unit, perfect for travel

34751	3 Outlet Travel Power Strip
34748	4 Outlet Travel Surge Protection, 350 joules

### PowerPRO Audio/Video Series



- New X3 Technology - Improves surge absorption and dissipation
- Surge protector Indicator
- Safety Shutdown Technology
- 90 Degree Rotating Gold-plated coax/DSS Connectors
- High Frequency Capacitor

34746	3 Outlet Audio/Video Surge Suppressor, 1080 joules, 70dB
-------	--

### BlueDiamond Surge Protector



- Prevents damage to electrical equipment from spikes and surges
- Convenient Phone/Modem Connector
- Protects the Direct Broadcast Satellite Systems
- Safety cover - each outlet has a sliding slot cover
- Indicator lights show the surge protection is in full force
- Eliminates electrical noise which interferes with data transmission

1984	9 Outlet Surge EMI/RFI Fax/Modem Powerbar, 3150 joules
------	--

Ensuring that every product made is designed to be equal parts stylish and functional. Simply put, it's **Style That Works**.



### Netbook Cases

- Fits most Netbooks 7" - 10.2"
- Camber doubles as Laptop rest for encouraged mobility

34983	Camber EVA Netbook Case & Platform, Black
34995	10.2" Advance Netbook Bag, Black



### Notebook Messenger 15.4"

- Includes 15.4" notebook sleeve for added protection
- Notebook compartment folds out of the way for use as a multi-purpose bag
- Comfortable strap with ergonomic no-slip pad

34883	Advance Notebook Briefcase - 15.4", Black
-------	---



### Notebook Briefcases 15.4" - 17"

- Padded computer nest & zippered accessory compartments
- Comfortable straps with ergonomic no-slip pads
- Durable, practical, and stylish designs

34879	Advance Notebook Briefcase - 15.4", Black
34875	Achieve Notebook Briefcase - 15.4", Black
34877	Extend Notebook Briefcase - 17", Black



### Notebook Backpacks 15.4" - 17"

- Includes 15.4" notebook sleeve for added protection
- Padded computer nest & zippered accessory compartments
- Comfortable straps with ergonomic no-slip pads
- Durable, practical designs

34884	Guide Notebook Backpack - 15.4", Black
34982	Swift Laptop Backpack - 17", Black



### Gaming Backpack

- Dedicated notebook compartment for up to 18" notebooks
- Secondary compartment has ample room for books, clothes, & accessories
- 4x reinforced shoulder strap pulls weight closer for more comfortable carrying
- Pull out water-resistant weather cover protects against, rain, snow, or dust

34996	Beacon Gaming Backpack - Black
-------	--------------------------------



34900



34984

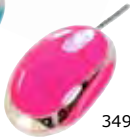
**Keyboards & Keypads**

34570	USB/PS2 Standard Keyboard, Black
34546	USB/PS2 Standard French Keyboard, Black
2608	USB/PS2 Roll-up Keyboard, White
34984	15 Hotkey Multimedia Keyboard, Black
34985	15 Hotkey French Multimedia Keyboard, Black
34686	19 Key USB Asynchronous Numeric Keypad
34900	3 in 1 USB Asynchronous Numeric Keypad

34950



34990



34989

**Mice**

34966	USB/PS2 Optical Scroll Mouse, Black		
34745	USB Optical Scroll Mouse, Silver		
34950	USB 2.0 Retractable Travel Mouse, Black		
34742	Wireless Optical Mobile Mini Mouse, Black		
34999	Optical USB Mouse, Gold	34990	Optical USB Mouse, TQ
34987	Optical USB Mouse, Green	34991	Optical USB Mouse, White
34988	Optical USB Mouse, Orange	34992	Optical USB Mouse, Yellow
34989	Optical USB Mouse, Pink		

**Graphic Tablets**

3681

3681	Graphics Tablet, 5.5" x 4"
3682	Graphics Tablet, 8" x 6"
3683	Graphics Tablet Replacement Pen

**Barcode Scanners**

3884

3884	USB Long Range CCD Barcode Scanner
3558	PS/2 Long Range CCD Barcode Scanner

**Bluetooth**

34791



3888

3888	Bluetooth USB 2.0 Adapter - RoHS
34791	Wireless Bluetooth Headset

**Hubs**

3886	3 Port USB 2.0 In-Desk Hub - 2"
3887	3 Port USB 2.0 In-Desk Hub w/Card-Reader - 3"
3802	4 Port USB 2.0 High-Speed Mobile Mini Hub
3875	4 Port USB 2.0 High-Speed Hub
3870	4 Port USB 2.0 High Speed Hub w/ Adapter
3871	7 Port USB 2.0 High-Speed Hub w/ Adapter



**Card Readers**

34977	USB 2.0 60-in-1 Multi-Card Reader/Writer
34629	USB 2.0 40-in-1 Mobile Multi-Card Reader/Writer
34750	USB 2.0 80-in-1 Slim Multi-Card Reader/Writer
34796	USB 2.0 24-in-1 Mobile Multi-Card Reader/Writer
34798	USB 2.0 Card Reader
34967	USB 2.0 60-in-1 3.5" Bay Mount Card Reader/Writer
34854	PC Express 12-in-1 Multi-Card Reader/Writer



**Web Cameras**

3864	USB 2.0 Webcam w/ Mic - 300k
3865	USB 2.0 Webcam w/ Mic - 100k



**Notebook and Mobility Accessories**

34899	Mobile Security Lock - 6ft
34695	Notebook Computer Cooling Pad - 3 fans
35003	Everki Shield Keyboard Protector
2320	USB Notebook Light



**Notebook Briefcases and Sleeves**

34869	Barcelona Notebook Briefcase - 15.4"
34014	Empire Notebook Case - 17"
34666	Neoprene Notebook Sleeve - 14"
34667	Neoprene Notebook Sleeve - 15.4"
34668	Neoprene Notebook Sleeve - 17"



### USB 2.0 & Firewire

3835



3815	3 External & 1 Internal Port USB 2.0 PCI Card
3816	4 External & 1 Internal Port USB 2.0 PCI Card
3754	4 External & 1 Internal Port USB 2.0 PCI Express Card
3783	2 External & 1 Internal Port Firewire PCI Card
3835	4 USB 2.0 & 3 Firewire Port Combo PCI Card

### Serial & Parallel

3882



3781	1 Port Serial PCI Card
3882	2 External DB9 Port Serial PCI Card
3756	1 Port Serial PCI Express Card
3831	2 Port Serial PCI Express Card
3885	2 Serial, 1 Parallel Port Combo PCI Express Card
3883	1 External Port Parallel PCI Card

### Serial ATA

3782



3782	2 Port SATA 150 RAID Controller PCI Card
3755	2 Port SATA 300 RAID PCI Express Card
3481	IDE to SATA 150 Converter
3814	SATA 150 to IDE Converter

### Sound Card

3849



3849	PCI 5.1 Sound Card
------	--------------------

### Modem

3842



3842

3568	PCI 56K Internal Modem
3842	USB Modem

### PC Cards

3834



3818	1 External Port Serial PC Card
3833	1 Port Serial Express PC Card
3690	2 Port USB 2.0 PCMCIA Card
3787	3 Port FireWire PC Card
3834	Express Card to PC Card Adapter

**UPS**

- 220 Joules surge protection, 600VA/300W
- Advanced protection for PC and Mac systems against power outages, sags, & surges
- \$100,000 connected equipment guarantee (US and Canada only)

3805	Line Interactive UPS - 600VA, 300W, Black
------	---

**Power Supply**

- Provides a steady, safe and reliable power source
- Ideal for new systems, replacement or upgrade applications
- Multiple built-in connectors allow quick peripheral installation without adapters

3770	ATX PSU P4 Power Supply, 600W
7213	Digital Power Supply Tester



3770

7213

**Power Adapters**

3828	Notebook Power Adapter - 90W
3829	Notebook Power Adapter - 120W
2935	International Travel Adapter
35007	USB Mobile Car Charger



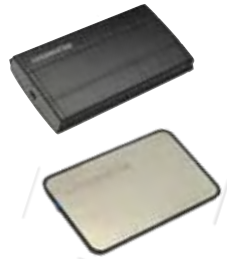
3828

35007

**Enclosures**

- Sturdy aluminum case protects drive and facilitates cooling
- Lightweight & compact design ideal for portable storage

USB 2.0	2.5" & 3.5", up to 480 Mbps
SATA	2.5" & 3.5", up to 480 Mbps
eSATA	2.5" & 3.5", up to 3 Gps

**Cooling Fans**

- Intel/AMD CPU Coolers with Heatsink and Fan
- Case Fans available from 40 to 120 mm



34498

**Video Splitters**

3889	2 Port VGA, 350MHz
3890	4 Port HDMI v1.3



3889



The technology leader in affordable computer audio dating back to the mid 80's, Cyber Acoustics' engineers and award winning research and development team are among the founders of the multimedia speaker industry.

### Performance Series Audio Systems



- Convenient desktop pod controls volume, on/off, aux in & headphone jack
- Illuminated power on indicator on satellites
- Magnetically shielded satellite speakers
- Acoustic balanced wood cabinet subwoofer
- Video game adapter cable included

Available Up to 62W

### Platinum Series Audio Systems



- Stylish design and intensity with bold, rich sound and commanding delivery
- Magnetically shielded satellite speakers
- Bass reflex subwoofer cabinet with tuned port
- Headphone output jack & aux input jack
- Convenient master controls & cloth grill cover

Available Up to 90W

### Studio Series Desktop Speakers



- High excursion, efficient drivers provide very good clarity and greater dynamic range.
- Low distortion, high power amplifier technology
- Bass reflex ported enclosure
- Magnetically shielded satellite speakers

Available Up to 12 W

### CA-MP50 Portable Speaker System



- Ideal for mobile phone and any portable audio device
- Battery operated or AC adapter included (batteries not included)
- Power on/off, volume control
- Inter-changeable colour inserts (5 options)
- Complete cable assembly included for immediate set up

### Also available from Cyber Acoustics:



Microphones



iPod Docks



Headsets



Headphones

Saitek designs and manufactures consumer electronics products which work together to improve the user's multimedia, gaming and communications experiences.

**Saitek**

**Pro Flight Range**

- Full line of Flight Simulation products
- Made with the highest quality materials and engineering techniques
- Designed to look, feel and act as a real flight experience
- Works with Microsoft Flight Simulator X and 2004
- Windows XP/XP64 and Vista Compatible

34630	Yoke & System	34632	Instrument Panel
2759	X-52 Flight System	34811	Switch Panel
34568	X-52 Pro Flight System	34997	Radio Panel
34385	Rudder Pedals	34998	Multi Panel
34631	Throttle Quadrant	34817	Headset



34997

34632

34630

**Gaming Keyboards & Cyborg Gaming Range**

- Designed to focus on gaming, with customizable buttons & modes
- Backlit keyboards provide extended game-play in low-light environments and Multimedia Hot-keys

**Eclipse Range**

34386	Eclipse II Backlit Keyboard
34814	Eclipse III Multimedia Keyboard
34775	Eclipse Wireless Keyboard
34981	Backlit Slim Multimedia Keyboard



34631



34814

**Cyborg Range**

34633	Cyborg Backlit Gaming Keyboard
34649	Cyborg 5.1 Gaming Headset
34655	Cyborg Adjustable Gaming Mouse
34334	Cyborg Pro-Gamer Command Unit



34655



34334

**Also available from Saitek:**

*coming soon!*



**Modern Warfare 2  
 Accessories**



**Headsets**



PC, XBOX360 & PS3  
**Gamepads**



PC, XBOX360 & PS3  
**Joysticks**

## ALLSOP

Allsop continues to make a push into the consumer electronics market, offering users anything from media storage to cleaning products. With a focus on getting rid of clutter and mismatched home décor - Allsop's products are simply functional and stylish.



### Cool Channel Notebook Stand

- Heat shield protects lap from heat
- Ergonomic and cushioned for easy to use lap use
- Uses passive air circulation instead of USB port

34628	Cool Channel Notebook Stand
-------	-----------------------------



### Ohmetric Netbook & Laptop Cases

- Padded lining and hardshell exterior protects your laptop from drops
- Lap desk keeps you cool, comfortable, and mobile
- Checkpoint Friendly

34975	Dual Function Hardshell Netbook Case - 10.2"
34976	Dual Laptop Platform & Sleeve - 15.4"

## memorex

Since Memorex burst onto the recording scene more than 35 years ago with "Is it live or is it Memorex?" a lot has changed. Memorex continues to remain one of the most widely recognized and respected names in the consumer electronics industry



### SimpleSave Back-Up Discs

- Automatically finds, organizes and backs up your photo files.
- No software to install
- Click once to save all your photos back onto the SimpleSave disc, or use advanced options to designate which files should be saved.

34965	SimpleSave Back-Up Discs - 5 pack
-------	-----------------------------------



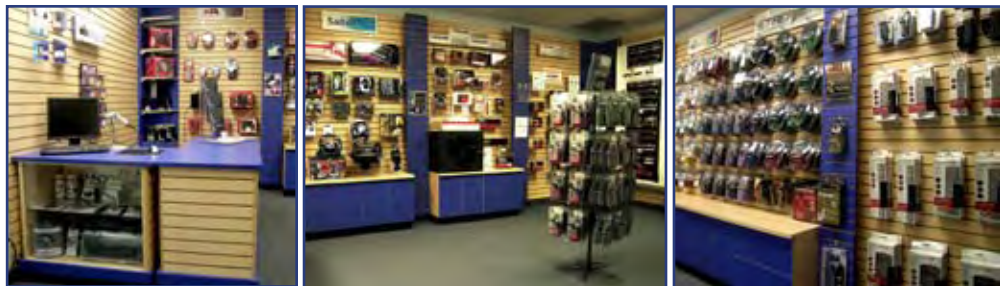
### Cleaning Products

34156	Canned Air Duster 152A
34079	Notebook Cleaning Kit
34155	DVD Lens Cleaner
2994	Optical Media Microfiber Cleaning Cloth
2993	Moist PC Quick Wipes - 50 pack

## The Tomauri Showroom

All of our exciting brands and products displayed in a retail store setting. View our product lines and learn more about our merchandising programs when you come for a visit with your Account Manager!

**Call today to make an appointment to visit our showroom displaying new and exciting products!**



## Tomauri Online

With an updated look, Tomauri.com is always evolving to better serve its customers. Advanced search, online real-time shopping, and easy Re-seller Access, are just some of the ways we strive to better our industry leading customer service!

### Shop Online!

- 24/7 Ordering
- Online Pricing & Availability
  - Same-day Shipping (on orders before 3pm ET)
- NO Minimum order charge with online orders



**Passive Networking:**

- 4 Server Racks and Cabinets
- 5 Racks and Accessories
- 6 Patch Panels
- 7 Service and Tools

**Active Networking:**

- 8-9 IP Cameras
- 10 Wired Networking
- 11-12 Wireless Networking
- 13 Antennas
- 14 Ethernet Switches
- 15 Network Adapters

**Cables:**

- 16 OEM Opportunities
- 16 Power
- 17 Networking
- 18 USB & Firewire
- 19 Computer & Internal
- 20-21 Audio/Video

**22-23 Merchandising Programs****Premium Brands:**

- 24 BlueDiamond Blister
- 25 Streamwire A/V Blister Cables
- 26 PowerPRO Surge Protectors
- 27 Everki Notebook Bags

**Peripherals:**

- 28 Mice & Keyboard
- 28 Input Devices
- 29 Hubs, Card Readers, Webcams
- 29 Notebook Bags & Accessories

**PC Components:**

- 30 PC/PCI Cards
- 31 Power Adapters
- 31 Fans, Enclosures

**32 Cyber Acoustics Speakers****33 Saitek Pro Flight & Gaming****34 Allsop & Memorex**

[www.tomaury.com](http://www.tomaury.com)  
[dealerguide09@tomaury.com](mailto:dealerguide09@tomaury.com)

88 Fulton Way  
Richmond Hill, ON  
L4B 1J5  
Tel: 1-877 486 6287  
Fax: 905 886 6452

[www.tomaury.com](http://www.tomaury.com)  
[dealerguide09@tomaury.com](mailto:dealerguide09@tomaury.com)

88 Fulton Way  
Richmond Hill, ON  
L4B 1J5  
Tel: 1-877 486 6287  
Fax: 905 886 6452



7 76704 29317 7